

# Oxford Glaze INTRA

Introducing Oxford Glaze INTRA  
Light cure varnish for provisional crowns and bridges



Highly esthetic and shiny surface without polishing!

Oxford Glaze INTRA is a light cure varnish. It is a durable coating which offers a perfect glossy surface of the temporary. The application is fast and with less effort in comparison to mechanical polishing.

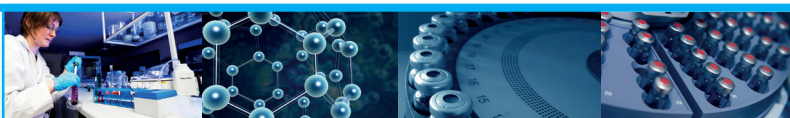
## Features and Benefits

### Features

- Perfect shine without polishing
- Light cure
- Optimal flow properties
- Improved wear resistance
- Can be used to repair temporaries
- Free of methylmethacrylate

### Benefits

- Saves time
- Less effort
- Highly esthetic
- Hinders plaque formation
- Faster and convenient
- Easy application
- Durability
- Versatile
- Excellent biocompatibility



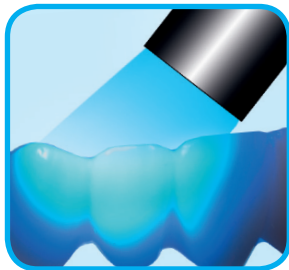
# Oxford Glaze INTRA

Oxford Glaze INTRA

Oxford Glaze INTRA: Easy application!



Application of  
Oxford Glaze INTRA

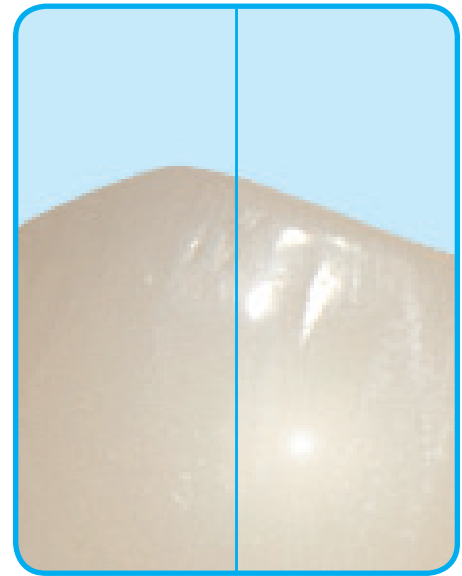


Light cure



Perfect gloss with  
Oxford Glaze INTRA

Oxford Glaze INTRA: Perfect result!



before

after

Perfect application with: Oxford Temp, esthetic and reliable temporary crown and bridge material

## Ordering Information

**Oxford Glaze INTRA, light cure varnish for provisional crowns and bridges**

Includes: 5 ml Oxford Glaze INTRA bottle

Part Number	Article
39-001	5 ml Oxford Glaze INTRA bottle

Space for you

 Oxford Scientific

Made in Germany by First Scientific Dental Materials GmbH