

Oxford GI Resin FILL UF

Introducing Oxford GI Resin FILL UF Light Cure Ultra Fine Resin Modified Glass Ionomer Cement for Filling



Good Esthetics, High Wear Resistance, Natural Adhesion and Remineralisation!

The **Oxford Resin Modified Glass Ionomer Cements** offer in comparison to conventional glass ionomer cements: **higher strength** in early phase of setting, higher **long term wear resistance** and **longer working time** combined with a **rapid light cure command set**. Furthermore they are **easier and faster to use** than composites and provide fluoride release.

The **Oxford GI Resin FILL UF** contains ultra fine particle fillers. This special technology improves the esthetic results of the products with a **good translucency, and an outstanding gloss**.

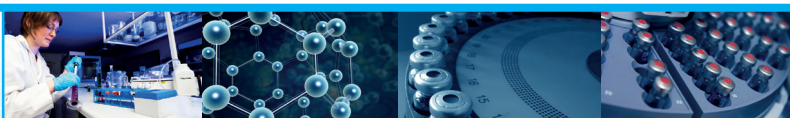
Features and Benefits

Features

- Good translucency
High colour stability
Very fine particles
- Thanks to resin component,
 - Higher early strength
 - Higher flexibility
 - No solubility
- Easy to manipulate and sculpt
Simple placement technique
- Fluoride release

Benefits

- Good esthetics for nice restorations
- Long term wear resistance
Higher mechanical resistance
Easily bonded to resins (for the sandwich technique)
Additional light cure command set
- Better handling
Less technique sensitive
Bulk filling
- Carries protection



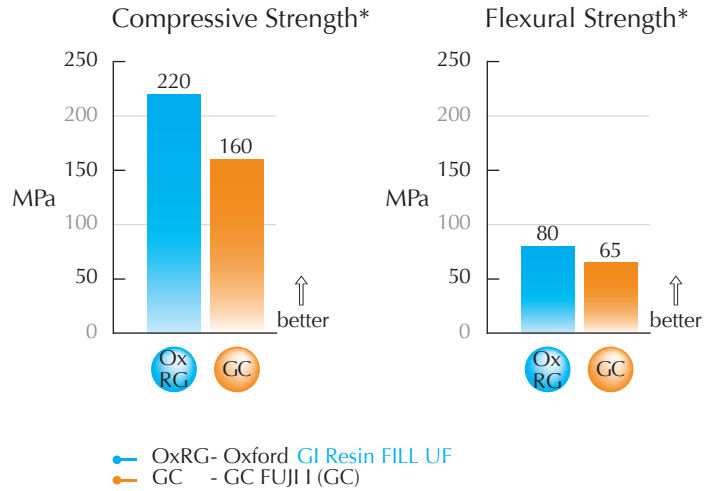
Oxford GI Resin FILL UF

Oxford GI Resin FILL UF: Reliable & Esthetic!

Higher Hardness = Stronger Filling!

	Barcol Hardness (after 24 hours)
Oxford GI Resin FILL UF	70
GC Fuji II (GC)	62

Excellent Mechanical Properties!



*Data available upon request

It fits with:

Oxford GI Resin PRIME VLC



Best results in adhesion can be achieved by application of **Oxford Resin PRIME VLC**, a light cure primer for resin modified glass ionomer cements.

Primer for Resin Modified Glass Ionomer Cement

Oxford GI Resin PRIME VLC is a simple to use primer for dentin and enamel to enhance the bond between light cure resin modified glassionomer cements (e.g. Oxford GI Resin FILL UF) and tooth structure.

Ordering Information

Oxford GI Resin FILL UF, Light Cure Ultra Fine Resin Modified Glass Ionomer Cement for Filling

Includes: 15 g powder / 8 ml liquid Oxford GI Resin FILL UF Handmix | dosage spoon | mixing block or 50 Oxford GI Resin FILL UF Capsules e.a. 0,5 g

Oxford GI Resin FILL UF Handmix:

Part Number	Article
51-012A2	Shade A2
51-012A3	Shade A3
51-012A35	Shade A3,5

Oxford GI Resin FILL UF Capsules:

Part Number	Article
51-013A2	Shade A2
51-013A3	Shade A3
51-013A35	Shade A3,5
05-002	Oxford Capsule Applier

Oxford GI Resin PRIME VLC, Light Cure Primer for Resin Modified Glassionomer Cements

Part Number	Article
51-014	1 x 5 ml Oxford GI Resin PRIME VLC bottle