

Introducing Oxford GI CEM X Advanced Glass Ionomer Cement for Luting – Less Humid Sensitive



Biocompatibility, Natural Adhesion, Remineralisation and Esthetics!

The Oxford Glass Ionomer Cements are biocompatible. With natural adhesion to the tooth, sustainable fluoride release, but without shrinkage, they provide a perfect marginal seal reducing risk for secondary caries or postoperative sensitivity.

The Oxford GI CEM X is a newly developed glass ionomer cement that shows, even in warm and humid climate, an excellent shelf life.

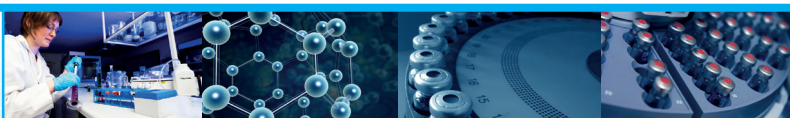
Features and Benefits

Features

- Hydrophilic property - moisture friendly
- Biocompatible (HEMA free)
- No need of etching and/or bonding
- Sustainable fluoride release
- Classical cement curing reaction

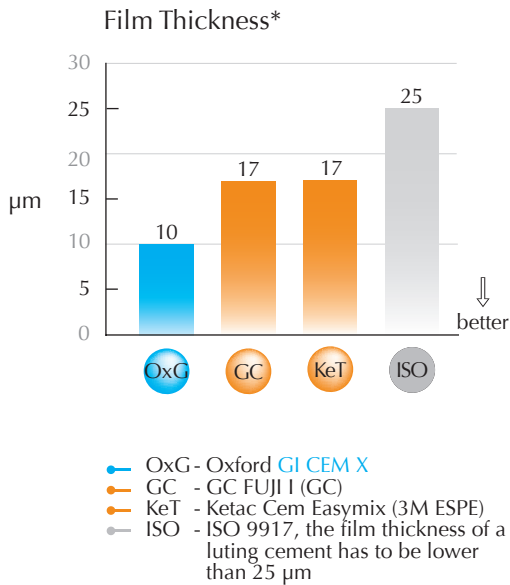
Benefits

- Excellent shelf life, even in warm and humid climate
- Almost no allergic reactions
- Recommended for paediatric dentistry
- Reduce the risks of postoperative sensitivity
- Maintain the integrity of the tooth
- Caries protection
- No shrinkage / perfect marginal seal / low risk for secondary caries

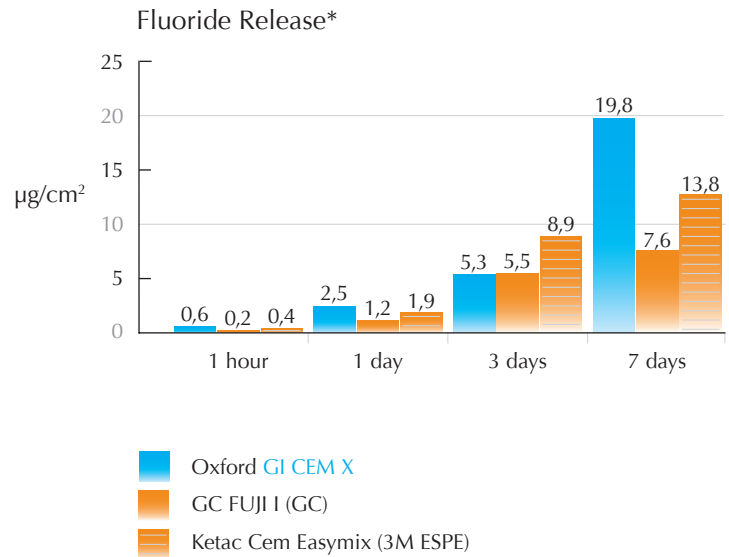


Oxford GI CEM X: Thin Film Thickness, Better fit!

Excellent Film Thickness!



More Fluoride!



Faster Setting!

	Working Time*	Setting Time*
Oxford GI CEM X	01:30	04:30
GC FUJI I (GC)	02:00	04:30
Ketac Cem Easymix (3M ESPE)	03:00	07:00

Good Mechanical Properties!

	Compressive Strength (MPa)*
Oxford GI CEM X	104
GC FUJI I (GC)	109
Ketac Cem Easymix (3M ESPE)	113

*Data available upon request

Ordering Information

Oxford GI CEM X, Advanced Glass Ionomer Cement for Luting – Less Humid Sensitive

Part Number	Article
51-015	15 g powder / 10 ml liquid Oxford GI CEM X Handmix I dosage spoon I mixing block
51-016	50 x Oxford GI CEM X Capsules e.a. 0,4 g
51-002	Oxford Capsule Applier