

Introducing Oxford Etch Etching gel for the total etch adhesive technique



Oxford Etch is a 37% phosphoric acid gel. With its advanced wetting and thixotropic properties it allows very easy and precise placement. With Oxford Etch it is very convenient to control etching of enamel and dentine areas. Therefore Oxford Etch is suitable for the total etch technique as well as only selective etching of enamel.

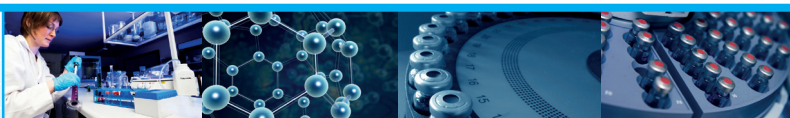
Features and Benefits

Features

- Excellent wetting of tooth surface
- Thixotropy
- Blue color

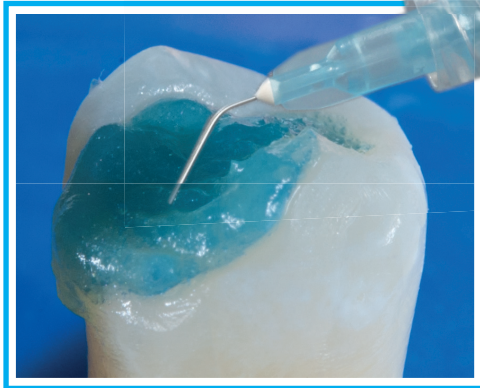
Benefits

- Optimal etching for high adhesion
- Easy control of etched areas
- Excellent for selected etching of enamel
- Secure visible control



Oxford Etch is universal!

Oxford Etch can be used with all bonding agents for efficient etching of dentine and enamel



Advanced wetting
+ Thixotropic properties
Perfect etching

Ordering Information

Oxford Etch, etching gel for the total etch adhesive technique

Includes: 3 ml / 3,9 g Oxford Etch syringe | 3 x Oxford Needle TIP blue

Part Number	Article
29-006	3 ml / 3,9 g Oxford Etch syringe 3 x Oxford Needle TIP blue

Space for you